

MUSKEGON



West Michigan's Shoreline City



City of Muskegon Evergreen Cemetery

Wall Restoration Project 2020

ROOF PROJECT SPECIFICATIONS

ROOF PROJECT 2020

Wall Restoration for:

**City of Muskegon
Evergreen Cemetery**

Note:

Mandatory Site Meeting:

August 11, 2020 at 1pm

391 Irwin Ave
Muskegon, MI 49442

Quotes Due:

August 25, 2020 by 2pm

City of Muskegon City
Hall 933 Terrace St
Muskegon, MI 49440

Sealed Quotations will be accepted by:

Ann Meisch
Ann.Meisch@shorelinecity.com
City of Muskegon



CITY OF MUSKEGON
EVERGREEN CEMETERY – WALL RESTORATION
TABLE OF CONTENTS

I.	Cover Page and Bid Information	3
II.	Evergreen Site-Plan	4
III.	Summary of Work	6
IV.	Specifications	8
V.	Manufacturer Field Services	12
VI.	Contractor Bid Form	18
VII.	US Communities / OMNIA Material Quantities	19

SCOPE OF WORK

- A. Contractor will wash the building with environmentally safe cleaner to prepare for water repellent
- B. Spot wash stubborn or special needs areas with appropriate cleaners (sample first)
- C. Grind failed mortar joints then install mortar with new matching or Close match::: Mortar samples are to be approved by owner
- D. At the Cornice and roof stone joints we will grind ALL the joints then install bond breaker & mortar color silicone sealant
- E. Repair the stone spals & Failed stone existing patches with stone restorer to match Limestone as close as we can per samples
- F. Contractor will caulk the perimeters of windows and doors with color match silicone
- G. Contractor will cover the windows with plastic to prep for clear water repellent
- H. Contractor will apply Clear water repellent per manufacturer’s instructions : After caulking is completed

LOCATION MAP



NOTES

1. STORE AND HANDLE ROOFING SHEETS IN A DRY, WELL-VENTILATED, WEATHER-TITE PLACE. STORE ROLLS OF FELT AND OTHER SHEET MATERIALS ON RAISED SURFACE. STAND ALL ROLL MATERIALS ON END. COVER ROLL GOODS WITH A CANVAS TARPULIN OR OTHER BREATHABLE MATERIAL (NOT POLYETHYLENE).
2. DO NOT LEAVE UNUSED MATERIALS ON THE ROOF WHEN ROOFING WORK IS NOT IN PROGRESS UNLESS PROTECTED FROM WEATHER AND OTHER MOISTURE SOURCES.
3. IT IS THE RESPONSIBILITY OF THE CONTRACTOR TO SECURE ALL MATERIAL AND EQUIPMENT ON THE JOB SITE. IF ANY MATERIAL OR EQUIPMENT IS STORED ON THE ROOF, THE CONTRACTOR MUST MAKE SURE THAT THE INTEGRITY OF THE DECK IS NOT COMPROMISED AT ANY TIME.
4. DO NOT APPLY ROOFING INSULATION OR MEMBRANE TO DAMP DECK SURFACE.
5. FULLY COMPLETE ALL MODIFIED BITUMINOUS MEMBRANE ROOFING FIELD ASSEMBLY WORK EACH DAY. PHASED CONSTRUCTION WILL NOT BE ACCEPTED.

CUSTOMER NOTE:

1. ALL OF GARLAND'S SHOP FABRICATED MATERIAL WILL BE MANUFACTURED TO THE DIMENSIONS SHOWN, UNLESS OTHERWISE NOTED.
2. IT IS ESSENTIAL THAT ANY NECESSARY CHANGES, NOTATIONS OR REQUESTED INFORMATION BE CLEARLY NOTED ON THE SHOP DRAWINGS.
3. NO MATERIAL WILL BE CONSIDERED RELEASED FOR FABRICATION UNTIL ALL PERTINENT INFORMATION (i.e. COLOR, DIMENSIONS, MATERIAL CONFIG-URATION) HAS BEEN RECEIVED.

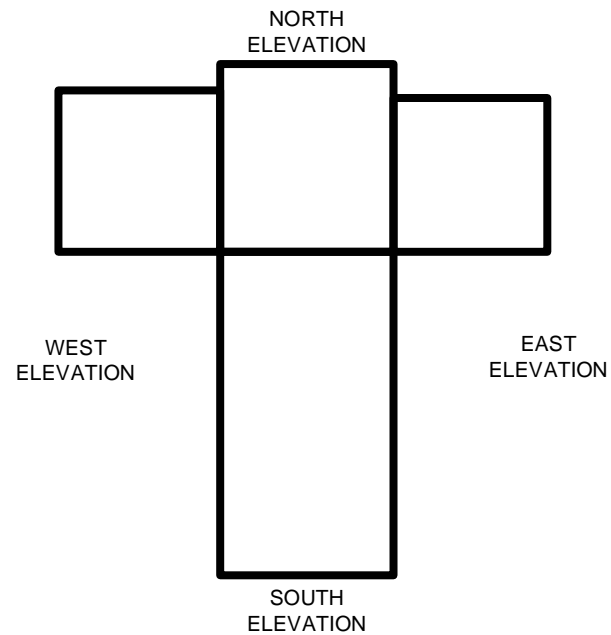
DRAWING INDEX

- A1 - COVER SHEET
- A2 – ELEVATION VISUALS

**CITY OF MUSKEGON
EVERGREEN CEMETERY
WALL RESTORATION
391 IRWIN AVE.
MUSKEGON, MI 49442**



BUILDING OVERVIEW



THE INFORMATION CONTAINED HEREIN IS OF A PROPRIETARY NATURE AND IS SUBMITTED IN CONFIDENCE FOR USE BY THE CLIENTS APPROVED BY THE ORIGINATOR OF THIS DOCUMENT ONLY. THE USE OF THESE DOCUMENTS FOR ANY OTHER PROJECTS, PURPOSE, LOCATION, PUBLICATION, REPRODUCTION OR DISTRIBUTION IN WHOLE OR PART, BY ANY INDIVIDUAL OR ORGANIZATION WITHOUT WRITTEN PERMISSION FROM THE ORIGINATING COMPANY IS PROHIBITED. THE INFORMATION HEREIN REMAINS THE PROPERTY AND ITS USE OR DISCLOSURE TO OTHERS IS PROHIBITED FOR ANY USE NOT AUTHORIZED BY THE ORIGINATING COMPANY.

APPROVED FOR BIDDING

**CITY OF MUSKEGON
EVERGREEN CEMETERY
391 IRWIN AVE.
MUSKEGON, MI 49442**

SHEET TITLE:

COVER SHEET

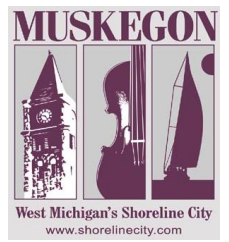
SHEET NO.

A1

NORTH ELEVATION



EAST ELEVATION



THE INFORMATION CONTAINED HEREIN IS OF A PROPRIETARY NATURE AND IS SUBMITTED IN CONFIDENCE FOR USE BY THE CLIENTS APPROVED BY THE ORIGINATOR OF THIS DOCUMENT ONLY. THE USE OF THESE DOCUMENTS FOR ANY OTHER PROJECTS, PURPOSE, LOCATION, PUBLICATION, REPRODUCTION OR DISTRIBUTION IN WHOLE OR PART, BY ANY INDIVIDUAL OR ORGANIZATION WITHOUT WRITTEN PERMISSION FROM THE ORIGINATING COMPANY IS PROHIBITED. THE INFORMATION HEREIN REMAINS THE PROPERTY AND ITS USE OR DISCLOSURE TO OTHERS IS PROHIBITED FOR ANY USE NOT AUTHORIZED BY THE ORIGINATING COMPANY.

APPROVED FOR BIDDING

CITY OF MUSKEGON
EVERGREEN CEMETERY
391 IRWIN AVE.
MUSKEGON, MI 49442

SHEET TITLE:

ROOF PLAN

SHEET NO.

A2



SOUTH ELEVATION

WEST ELEVATION



SECTION 00 10 00 .001

SUMMARY OF WORK

PART 1 - GENERAL

1.1 RELATED DOCUMENTS

- A. Attached SUMMARY OF WORK, INTENT OF THE SPECIFICATIONS, PROTECTION, HOUSEKEEPING, forms a component part of this section.

1.2 SUMMARY OF WORK:

- A. Contractor will wash the building with environmentally safe cleaner to prepare for water repellent
- B. Spot wash stubborn or special needs areas with appropriate cleaners (sample first)
- C. Grind failed mortar joints then install mortar with new matching or Close match::: Mortar samples are to be approved by owner
- D. At the Cornice and roof stone joints we will grind ALL the joints then install bond breaker & mortar color silicone sealant
- E. Repair the stone spals & Failed stone existing patches with stone restorer to match Limestone as close as we can per samples
- F. Contractor will caulk the perimeters of windows and doors with color match silicone
- G. Contractor will cover the windows with plastic to prep for clear water repellent
- H. Contractor will apply Clear water repellent per manufacturer's instructions : After caulking is completed

1.3 INTENT OF THE SPECIFICATIONS

- A. The intent of these specifications is to describe the material and methods of construction required for the performance of the work. In general, it is intended that the drawings shall delineate the detailed extent of the work. When there is a discrepancy between drawings, referenced specifications, and standards and this specification, this specification shall govern.

1.4 PROTECTION

- A. The contractor shall use every available precaution to provide for the safety of the property owner, visitors to the site, and all connected with the work under the Contract.
- B. All existing facilities both above and below ground shall be protected and maintained free of damage. Existing facilities shall remain operating during the period of construction unless otherwise permitted. All access roadways must remain open to traffic unless otherwise permitted.
- C. Barricades shall be erected to fence off all construction areas from operations personnel.
- D. Safety Requirements:

1. All application, material handling, and associated equipment shall conform to and be operated in conformance with OSHA safety requirements.
2. Comply with federal, state, and local and owner fire and safety requirements.
3. Advise owner whenever work is expected to be hazardous to owner employees and/or operations.
4. Maintain proper fire extinguisher within easy access whenever power tools, roofing kettles, and torches are being used. A MINIMUM OF A 2 HOUR FIRE WATER SHALL BE STRICTLY ADHERED TO WHENEVER PROPANE TORCHES ARE IN USE.
6. ALL SAFETY REQUIREMENTS OF THE BUILDING OWNER MUST BE FOLLOWED. NO EXCEPTIONS WILL BE PERMITTED. SAFETY ORIENTATION MEETING REQUIRED PRIOR TO PERFORMING ANY WORK.

1.5 HOUSEKEEPING

- A. Keep materials neat and orderly.
- B. Remove scrap, waste and debris from the project area.
- C. Maintenance of clean conditions while work is in progress and cleanup when work is completed shall be in strict accordance with the "General Conditions" of this contract.
- D. Fire protection during construction.
- E. Follow all requirements established by the building owner.

END OF SECTION

SECTION 07 19 00

WATER REPELLENTS AND SEALANTS

PART 1 – GENERAL

1.1 SECTION INCLUDES

- A. Installation of clear penetrating sealer on surfaces indicated on drawings, consisting of preparation of existing and new surfaces.

1.2 RELATED DOCUMENTS

- B. Section 03 30 00 – Cast-in-Place Concrete
- C. Section 03 41 00 – Precast Structural Concrete
- D. Section 04 21 00 – Masonry Assemblies Unit Masonry
- E. Section 09 24 00 – Portland Cement Plastering
- F. Section 07 92 00 – Joint Sealants: Coordination for compatibility
- G. Section 09 96 53 – Elastomeric Coatings: Coordination for compatibility

1.3 REFERENCES

- A. ASTM C 140 - Methods for Sampling and Testing Concrete Masonry Units
- B. ASTM E 96 - Test Methods for Water Vapor Transmission of Materials
- C. ASTM E 514 - Standard Test Method for Water Penetration and Leakage Through Masonry
- D. ASTM G 53 - Standard Practice for Operating Light- and Water-Exposure Apparatus for Exposure of Nonmetallic Materials

1.4 SUBMITTALS

- A. Product Data: Provide manufacturer's technical product data for each type of sealing product specified. Include data substantiating that the materials comply with specified requirements.
- B. Warranty: Submit a sample warranty identifying the terms and conditions stated in Section 1.5.

1.5 WARRANTY

- A. Material Warranty: Provide for correcting failure of water repellent treatment to resist penetration of water.
 - a. Warranty Period: Five years.

1.6 DELIVERY, STORAGE, AND HANDLING

- A. Deliver products to site with seals and labels intact, in manufacturer's original containers, free of any type of defect or damaged.

- B. It is the responsibility of the contractor to secure all material and equipment on the job site.
- C. Materials cannot be stored where temperatures may drop to or below freezing (32° Fahrenheit). Store material under shaded area away from direct sunlight between 40°F to 110°F. Keep away from heat, ignition/sparks and from rain/standing water. Prevent the product from freezing. Keep the container tightly closed after every withdrawal when not in use.

1.7 JOB CONDITIONS

- A. Do not apply in inclement weather, if rain is expected within 12 hours, or if temperature is below 40°F or will fall below 40°F within 12 hours.
- B. If applying by spray, protect nearby areas from overspray. It is the contractor's responsibility to protect other areas of the building or nearby personal property from solvents, cleaners, or waterproofing products utilized during installation.

PART 2 – PRODUCTS

2.1 PRODUCTS – GENERAL

- A. Basis of Design: Materials, manufacturer's product designations, and/or manufacturer's names specified herein shall be regarded as the minimum standard of quality required for work of this Section. Comply with all manufacturer and contractor/fabricator quality and performance criteria specified in Part 1.

2.2 ACCEPTABLE MANUFACTURERS

- A. The design is based upon waterproofing systems engineered and manufactured by The Garland Company or approved equal.

The Garland Company
3800 East 91st Street
Cleveland, Ohio 44105
Telephone: (800) 762-8225
Website: www.garlandco.com

2.3 MATERIALS

- A. Provide damp-proofing coating and related products as follows:
 - 1. Seal-A-Pore: A solvent based silicone solution for damp-proof above grade masonry surfaces that provides water repellency by chemically reacting with the substrate.
 - a. Color – Clear to Amber dries clear
 - b. Carrier – Solvent Mineral Spirits
 - c. Density @ 77°F – 6.7 lb.gal. (ASTM D 1475)
 - d. Viscosity @ 77°F – Typical 15 sec. (ASTM D4212)
 - e. Volatile Organic Content – 700 g/l
 - 2. Tuff-Stuff MS: A moisture-curing, single-component, non-sag polyurethane hybrid sealant designed to maintain an effective bond and seal between materials of similar and dissimilar surfaces, porosities, and coefficients of expansion. Used to fill small holes and cracks in masonry prior to application of damp-proofing material.

- a. Color – Aluminum Stone, Classic Bronze, Natural Stone, or True White (To be selected by client for best match to existing masonry surfaces)
 - b. 100% Modulus- 50 psi (ASTM C719)
 - c. Adhesion-in-Peel – 25 pli (ASTM C920)
 - d. Bond – Passes Durability Class 25 (ASTM C920)
 - e. Hardness, Shore A – 25-35 (ASTM C920, 15-50)
 - f. Tack Free Time – 1.0 hour (ASTM C679)
 - g. Tensile Strength – 225 psi (ASTM D412)
 - h. Ultimate Elongation – 450-550% (ASTM D412)
3. Nontoxic Biodegradable Cleaner: B-Clean is a heavy-duty chemical formulation designed to clean a variety of masonry substrates including: concrete, brick, stone, aggregate, and block surfaces.

NOTE: Allow additional material for rough or irregular surfaces and up to 10% for material loss during application and differences in substrate porosity.

PART 3 – EXECUTION

3.1 SURFACE PREPARATION

- A. Cleaning Methods: All masonry surfaces to be coated must be free of dirt, salt deposits, and other foreign materials.
- 1. Nontoxic Biodegradable Cleaner: Nontoxic Biodegradable Concrete & Masonry Cleaner: Scrape, sand, or wire brush all hard or glossy surfaces and residual contaminants to assure effective cleaning. Use the most abrasive methods necessary to remove all contaminants that will inhibit the cleaning solution from properly saturating the substrate. Rinse the substrate to be treated thoroughly with clean water to remove excess debris and dampen the surface. Beginning at the top of the substrate working down to the bottom, generously apply the B-Clean solution directly to the affected areas using overlapping patterns. Allow the solution to soak into surface for 20-30 minutes. Do NOT allow surface to dry. Reapply a light mist of the solution intermittently to ensure the surface remains damp. Depending on the degree of contamination and exposure a stiff bristle brush may be required once the solution reacts. Next, using overlapping patterns rinse the surface from top to bottom with water. Additional applications may be required dependent upon the severity of the contaminant, using the same approach as above. Allow the substrate sufficient time to dry.
 - 2. Solvent & Acid Cleaners: Wipe up grease or oil with a solvent and absorbent material. Disposal of this material should be in accordance with local laws and codes. Wash with solvent-alkaline cleaners diluted one-part cleaner and five parts water. Rinse thoroughly with clean water. If evidence of oil film remains as indicated by water “beading,” etch surface with 10% solution muriatic acid. Agitate surface with stiff bristle broom; then rinse with clean water. Remove curing compounds by etching with 10% muriatic acid followed by clean water rinse. Allow to thoroughly dry before applying coating. Grinding or sandblasting can remove heavy deposits of contaminants. Any residual traces of asphalt stains must be sealed with an epoxy primer to avoid staining of light colored top coats. Apply primer in two coats and allow a minimum of 48 hours cure time.
- B. Repoint any loose or missing joints in the masonry wall.
- 1. Defective mortar or stucco areas should be repaired using a cement-based patching compound.

- C. New masonry walls require 3-week cure time prior to application of the clear masonry sealer.
- D. Joint Treatment:
 1. Non-moving Cracks: Stripe coats all non-moving cracks. Fill the crack first with a bead of Tuff-Stuff MS sealant and strike flush. After filling, apply Tuff-Coat for 2" on each side of the crack 16-20 mils thick and allow curing. When applying the elastomeric coating system on the wall, go over the stripe coat to achieve a total thickness of 48-52 mils.
 2. Moving Cracks: Remove all dirt and loose chips of concrete from the crack. Fill with Tuff-Stuff MS and strike flush with the wall surface. Center 4" wide piece of polyester tape over the crack and adhere it firmly and thoroughly to the wall. Stripe coat 16-20 mils of Tuff-Coat over the polyester tape and for 2" on each side of the crack. When applying the elastomeric coating system on the wall, go over the stripe coat to achieve a total thickness of 48-52 mils.
 3. Control Joints: Place a backer material (solvent expanded plastic such as polyethylene or polypropylene) in joint. The backer material should be oversized, so it can be compressed into the joint and flush to the wall surface. Apply a bead of Tuff-Stuff MS sealant over the backer rod sealing the joint and strike flush with the wall surface.
- E. Repair cracks and holes in the masonry with Tuff-Stuff MS urethane hybrid sealant.
 1. Seal around any penetrations, fasteners, or equipment attached to wall.
 2. Once Tuff-Stuff MS is applied, allow 24-hour cure time prior to application of the clear masonry sealer.

3.2 DAMP-PROOFING APPLICATION

- A. Once the surface is prepared, apply the clear masonry sealer with a wide brush or spray equipment until surface appears shiny and wet.
- B. Coverage rates will vary from 75 to 200 sq. ft. per gallon, depending on porosity of substrate.

3.3 FIELD QUALITY CONTROL

- A. The contractor for work under this section shall maintain a quality control program specifically to verify compliance with this specification. A daily log shall be kept recording actions in the field.
- B. Inspections: A minimum of three (Substrate, Application and Final) inspections by an approved manufacturer's representative will be required on all projects requiring a warranty.

SECTION 01 43 33.75

ROOFING MANUFACTURER'S FIELD SERVICES

PART 1 – GENERAL

1.1 RELATED DOCUMENTS

- A. Drawings and general provisions of the Contract, including the Conditions of the Contract and Division 07 Specification Sections apply to this Section.

1.2 SUMMARY

- A. Section includes Manufacturer's field services for roofing assemblies.
- B. Related Sections:
 - 1. Section 07 05 00 – Common Work Results for Thermal and Moisture Protection.
- C. Related Work Specified Elsewhere:
 - 1. Roofing Material: Section 07 52 00- Modified Bituminous Membrane Roofing.
 - 2. Roofing Material: Section 07 52 10 – Coal Tar-Modified Bituminous Membrane Roofing
 - 3. Roofing Material: Section 07 51 13 – Built-Up Asphalt Roofing – Hot-Applied
 - 4. Roofing Material: Section 07 51 14 – Built-Up Asphalt Roofing – Cold-Applied
 - 5. Roofing Material: Section 07 51 16 – Built-Up Coal Tar Roofing
 - 6. Roofing Material: Section 07 41 00 – Manufactured Metal Roofing Panels
 - 7. Roofing Material: Section 07 41 00.0100 – Manufactured Metal Roofing Panels
 - 8. Roofing Material: Section 07 41 00.001 – Manufactured Metal Roofing Panels

1.3 REFERENCES

- A. International building Code (current edition) or local authority building code.
- B. American Society of Civil Engineers (ASCE): ASCE 7, Minimum Design Loads for Buildings and Other Structures.
- C. Factory Mutual Global (FMG): Roof Assembly Classifications.
- D. National Roofing Contractors Association (NRCA): Roofing and Waterproofing Manual.
- E. American National Standards Institute and Single Ply Roofing Institute (ANSI/SPRI): ANSI/SPRI ES-1 Testing and Certification Listing of Shop Fabricated Edge Metal.

1.4 SUBMITTALS FOR REVIEW

- A. Product Data: Provide manufacturer's technical product data for each type of roofing product specified. Include data substantiating that materials comply with specified requirements.
- B. Specimen Warranty: Provide an unexecuted copy of the warranty specified for this Project, identifying the terms and conditions required of the Manufacturer and the Owner.

- C. Roofing System Manufacturer's Evaluation: Provide a comprehensive written assessment comparing available roofing solutions with validation of why the roofing system selection for the specific project is suitable and appropriate.
- D. Wall and Window System Manufacturer's Report Form: Provide a copy of the report form utilized by the roofing system manufacturer for progress inspections to monitor installation and quality.
- E. Online Reporting Capabilities: Provide a sample of the roofing system manufacturer's online roof inspection report as well as information about how long inspection reports are available to owner.

1.5 SUBMITTALS FOR INFORMATION

- A. Manufacturer's Installation Instructions: Submit installation instructions and recommendations indicating special precautions required for installing the membrane.
- B. Manufacturer's Certificate: Certify that roof system furnished is approved by Factory Mutual Global, Underwriters Laboratories, Warnock Hersey or approved third party testing facility in accordance with ASTM E108, Class [A or B or C] for external fire and meets local or nationally recognized building codes.
- C. Manufacturer's Certificate: Certify that materials are manufactured in the United States and conform to requirements specified herein, are chemically and physically compatible with each other, and are suitable for inclusion within the total roof system specified herein.
- D. Manufacturer's Certificate: Submit a certified copy of the roofing manufacturer's ISO 9001 compliance certificate.
- E. Written certification from the roofing system manufacturer certifying the applicator is currently authorized for the installation of the specified roof system.
- F. Design Loads: Submit copy of manufacturer's minimum design load calculations according to ASCE 7, Method 2 for Components and Cladding. In no case shall the design loads be taken to be less than those detailed in Design and Performance Criteria article of this specification.
- G. Qualification data for firms and individuals identified in Quality Assurance Article below.
- H. Test Reports: Submit ANSI/SPRI ES-1 Testing and Certification Listing of Shop Fabricated Edge Metal Products.
- I. Substitutions: Products proposed as equal to the products specified for this project shall meet all of the requirements in the appropriate Division 7 specifications and shall be submitted for consideration at least 7 days prior to the date that bids must be submitted.
 - 1. Proposals shall be accompanied by a copy of the manufacturer's standard specification Section. That specification Section shall be signed and sealed by a professional engineer licensed in the state in which the installation is to take place. Substitution requests containing specifications without licensed engineer certification shall be rejected for non-conformance.

2. Manufacturer's checklist will be accompanied with any substitution to verify equal performance characteristics to those specified in Division 7 specification.
3. The Owner's decision regarding substitutions will be considered final.

1.6 CONTRACT CLOSEOUT SUBMITTALS

- A. Project Warranty: Provide specified warranty for the Project, executed by the authorized agent of the Manufacturer.
- B. Roofing Maintenance Instructions: Provide a roof care and maintenance manual of manufacturer's recommendations for maintenance of installed roofing systems.
- C. Insurance Certification: Assist Owner in preparation and submittal of roof installation acceptance certification as may be necessary in connection with fire and extended coverage insurance on roofing and associated work.
- D. Inspection Logs: Copy of inspection reports as performed by the manufacturer shall be submitted at project closeout and include photographic documentation of installation progress, weather conditions, and personnel on the project at the time of every inspection.

1.7 QUALITY ASSURANCE

- A. Manufacturer Qualifications: Company specializing in manufacturing the products specified in this Section with not less than [12] years documented experience [and have ISO 9001 certification].
- B. Installer Qualifications: Company specializing in specified roofing installation with not less than [5] years experience and authorized by restoration system manufacturer as qualified to install manufacturer's roofing materials.
- C. Installer's Field Supervision: Maintain a full-time Supervisor/Foreman on job site during all phases of roofing work while roofing work is in progress. Maintain proper supervision of workmen.
- D. Maintain a copy of the roof plans, details, and specifications in the possession of the Supervisor/Foreman and on the roof at all times.
- E. Source Limitations: Obtain all primary components of roof system from a single manufacturer. Secondary products that are required shall be recommended and approved in writing by the roofing system Manufacturer.
 1. The manufacturer providing the roofing system warranty must verify that they manufacture a minimum of 75% of the products utilized in the roofing system of this project. Products that are private labeled shall not be considered as manufactured by the roofing system supplier.
 2. Upon request of the Architect or Owner, submit Manufacturer's written approval of secondary components in list form, signed by an authorized agent of the Manufacturer.
- F. Source Quality Control: Manufacturer shall have in place a documented, standardized quality control program such as ISO-9001.

1.8 PRE-INSTALLATION CONFERENCE

- A. Pre-Installation Roofing Conference: Convene a pre-roofing conference approximately two (2) weeks before scheduled commencement of roofing system installation and associated work.
- B. Require attendance of installer of each component of associated work: installers of deck or substrate construction to receive roofing work: installers of rooftop units and other work in and around roofing that must precede or follow roofing work (including mechanical work if any): architect and/or engineer: owner: roofing system manufacturer's full time employee: and other representatives directly concerned with performance of the Work, including (where applicable) owner's insurers, testing agencies and governing authorities. Objectives of conference include:
 - 1. Review foreseeable methods and procedures related to roofing work, including set up and mobilization areas for stored material and work area.
 - 2. Tour representative areas of roofing substrates (decks), inspect and discuss condition of substrate, roof drains, curbs, penetrations and other preparatory work performed by others.
 - 3. Review structural loading limitations of deck and inspect deck for loss of flatness and for required attachment.
 - 4. Review roofing system requirements (drawings, specifications and other contract documents).
 - 5. Review required submittals both completed and yet to be completed.
 - 6. Review and finalize construction schedule related to roofing work and verify availability of materials, installer's personnel, equipment and facilities needed to make progress and avoid delays.
 - 7. Review required inspection, testing, certifying and material usage accounting procedures.
 - 8. Review weather and forecasted weather conditions and procedures for coping with unfavorable conditions, including possibility of temporary roofing (if not a mandatory requirement).
 - 9. Record discussion of conference including decisions and agreements (or disagreements) reached and furnish a copy of record to each party attending. If substantial disagreements exist at conclusion of conference, determine how disagreements will be resolved and set date for reconvening conference.
- C. The Owner's Representative will designate one of the conference participants to record the proceedings and promptly distribute them to the participants for record.
- D. The intent of the conference is to resolve issues affecting the installation and performance of roofing work. Do not proceed with roofing work until such issues are resolved to the satisfaction of the owner and [architect and/or engineer] of record. This shall not be construed as interference with the progress of Work on the part of the owner or of Record.

1.9 MANUFACTURER'S INSPECTIONS

- A. When the Project is in progress, a full-time employee of the damproofing system manufacturer must provide the following:
 - 1. Report progress and quality of the work as observed. Progress reports must be published to an online system as referenced in Section 1.4.
 - 2. Provide periodic (3 days per week) roofing installation inspections: Inspections must include; photographic documentation of work in-progress and written statements of compliance with details/shop drawings.

3. Report to the owner, architect and/or engineer in writing any failure or refusal of the contractor to correct unacceptable practices called to the contractor's attention.
4. Confirm after project completion that the manufacturer has observed no application procedures in conflict with the specifications other than those that may have been previously reported and corrected.

1.10 WARRANTY

- A. Upon completion of installation, and acceptance by the owner and architect and/or engineer, the manufacturer will supply to the owner the specified warranty.
- B. Installer will submit a two (2)- year workmanship warranty to the manufacturer with a copy directly to the owner.
- C. The manufacturer must have been in continuous business operation for a period of time at least as long as the length of the roof system warranty provided for this project.

PART 2 – PRODUCTS (NOT USED)

PART 3 – EXECUTION

3.1 EXECUTION, GENERAL

- A. Comply with requirements of related Division 07 Section.

3.2 GENERAL INSTALLATION REQUIREMENTS

- A. Cooperate with manufacturer, inspection and test agencies engaged or required to perform services in connection with installing the roof system.
- B. Insurance/Code Compliance: Where required by code, install and test the roofing system to comply with governing regulation and specified insurance requirements.

3.3 FIELD QUALITY CONTROL

- A. Manufacturer Representative shall perform field inspection as specified in Article titled: MANUFACTURER'S INSPECTIONS above. Inspections must include photographic documentation of installation progress, weather conditions, and personnel on the project at the time of inspection.
- B. Correct defects or irregularities discovered during field inspection. Issues deemed defective must be re-inspected and determined suitable by the manufacturer.
- C. Require attendance of materials manufacturers' representatives at site during installation of the roofing system. A copy of the specification shall also be on site at all times.
- D. Frequent progress meetings shall be conducted during the performance of roof system installation and must be attended by the owner, architect or engineer, roofing system manufacturer's full time employee, and other representatives directly concerned with performance of the work.

3.4 FINAL INSPECTION

- A. At the completion of the installation and associated work, meet with contractor, architect or engineer, installer, installer of associated work, owner, manufacturer's representative, and other representatives directly concerned with performance of roofing system.
- B. Walk off wall surface areas of the building, inspect perimeter building edges as well as flashing of roof penetrations, walls, curbs and other equipment. List all items requiring correction or completion and furnish copy of list to each party in attendance.
- C. Notify the [contractor] [architect and/or engineer] [owner] upon completion of corrections.
- D. Following the final inspection, provide written notice of acceptance of the installation from the roofing system manufacturer.
- E. Immediately correct roof leakage during construction. If the contractor does not respond within twenty four (24) hours, the owner may exercise right to correct the Work under the terms of the Conditions of the Contract.

END OF SECTION

Contractor's Bid
City of Muskegon
Evergreen Cemetery
2020 Wall Restoration Project

To: Ann Meisch
City of Muskegon City Hall
933 Terrace St
Muskegon, MI 49440
Ann.Meisch@shorelinecity.com

Bid Due Date: August 25, 2020 by 2pm

Bids are to be submitted to the above address by the time and date listed above. Bids shall be sealed and marked "Bid for 2020 Restoration Project". Bids received after the Due Date and Time will not be considered.

All labor, materials, services and equipment necessary for competition of the work shown on the drawings and in the specifications.

BASE PROPOSAL SUM FOR SCOPE:

All labor, materials, services and equipment necessary for completion of the work shown on the drawings and in the specifications.

_____ DOLLARS (\$ _____)

*****Note:**

Extra work may be necessary other than required by the plans and specifications, extra work will be completed according to the written instructions of the Owner for the following unit prices:

APPROXIMATE SQUARE FOOTAGE:

NORTH ELEVATION:	_____	SQUARE FEET
EAST ELEVATION:	_____	SQUARE FEET
WEST ELEVATION:	_____	SQUARE FEET
SOUTH ELEVATION:	_____	SQUARE FEET

Respectfully Submitted,

SIGNATURE: _____

TITLE: _____

BUSINESS NAME: _____

CONTRACTOR ADDRESS: _____ **DATE:** _____

ADDENDUM TO BID PACKAGE

It is the intent of the City of Muskegon (“Agency”) to purchase materials for the City of Muskegon 2020 Evergreen Cemetery Wall Restoration (“Project”) located at 391 Irwin Ave. Muskegon, MI directly from Garland Inc., based upon the Agency’s participation in the U.S. Communities / OMNIA Government Purchasing Alliance’s program for Roofing Supplies and Related Products and Services, as priced by and awarded to Garland/DBS, Inc., resulting from the competitively solicited Sealed Bid # PW1925 issued by the Racine County Board of Commissioners.

For this project, the Garland Representative will provide the City of Muskegon with the amounts and pricing for the Garland Material that will be needed for the project:

Evergreen Cemetery

Base Bid

Product #	Product Name	Unit / Size	Coverage Rate	Quantity
2139	Green-Lock Sealant XL	20 oz. Saus	12 tubes/ case	
2130-NATSTONE	Tuff-Stuff MS Natural Stone	10 oz.	24 tubes / case	
2130-ALUM	Tuff-Stuff MS Aluminum Stone	10 oz.	24 tubes / case	
2130-BRNZ	Tuff-Stuff MS Classic Bronze	10 oz.	24 tubes / case	
2130-TRUWHITE	Tuff-Stuff MS True White	10 oz.	24 tubes / case	
7771-5	B-Clean	5-gal	100-300 SF/ Gal	
1715-5	Seal-A-Pore WB	5-gal	75-200 SF/ Gal	

PLEASE NOTE:

1. It is the responsibility of the bidder to obtain any product-related information from the Garland representative prior to bid submission.
2. Additional Garland Material needed for this project needs to be included in the contractors base bid.
3. Contractor will EXCLUDE the above pricing from their base bid due to the fact the City will be buying the material directly from Garland through the US Communities Contract